

# Community Excellence Award Coolidge Municipal Parking

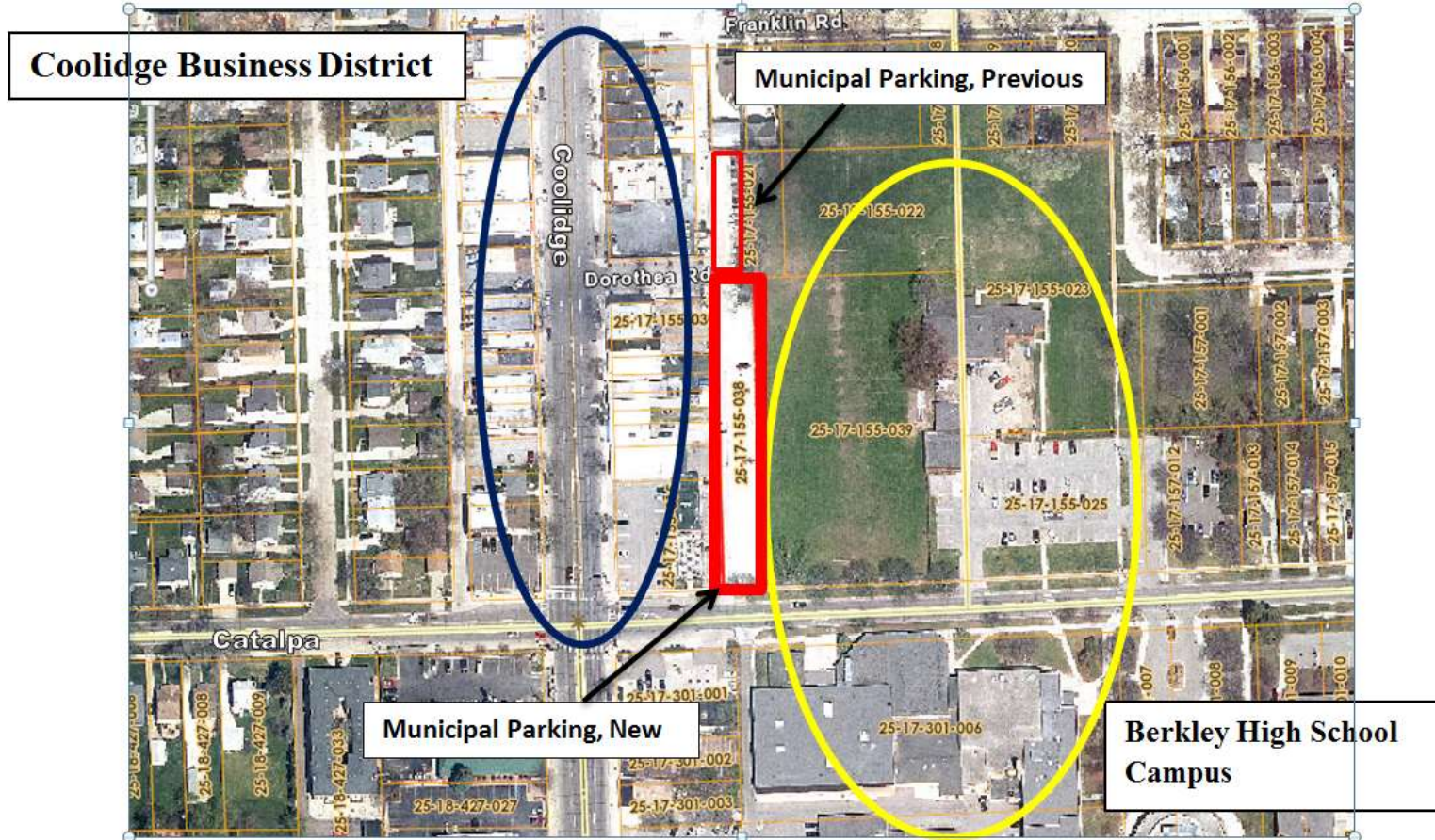


# STAKEHOLDERS



- Merchants
- Berkley School District
- Downtown Development Authority (DDA)
- City of Berkley

# LOCATION



# BEFORE



- Vibrant Commercial District
  - Near Berkley High School
  - Limited municipal parking nearby



# BEFORE



- Small Municipal Parking Lot
- Room to Grow



# PROCESS, PART ONE



The City has land nearby, but it is leased to the School District.

- Merchants organize and approach the DDA and the City about needed improvements.
- The City and DDA confirm that additional parking is needed.
- The City discusses the matter with the School District.

# PROCESS, PART TWO



The School District agrees to terminate the lease.

- The City rezones the land from Community Centerpiece to Parking District.
- The City and the DDA agree to swap projects:
  - The DDA will pay for the library's new roof because the library is located within the DDA's District.
  - The City will pay for the new municipal parking because it is located just outside of the DDA District.

# PROCESS, PART THREE



The City has plans developed for the new parking lot.

- The City presents the site plan to the City Planning Commission for approval. The plan is approved.
- The parking lot is constructed complete with a new bicycle rack and decorative fence.
- The municipal parking lot is available for businesses and school functions. Parking is free.



# AFTER



Vibrant Commercial District  
PLUS  
Modern Parking Lot with Decorative Fence and Bike Racks



# OUTCOMES / BENEFITS



- Free parking for the community.
- Location at the rear of the businesses encourages walking plus bike rack fulfills the City's Complete Streets Resolution.
- On-street parking now available for business customers.
- Continued improvements to the business district, including:
  - 10 new businesses
  - Property improvements including new signs, painting of facades, and landscaping.

