

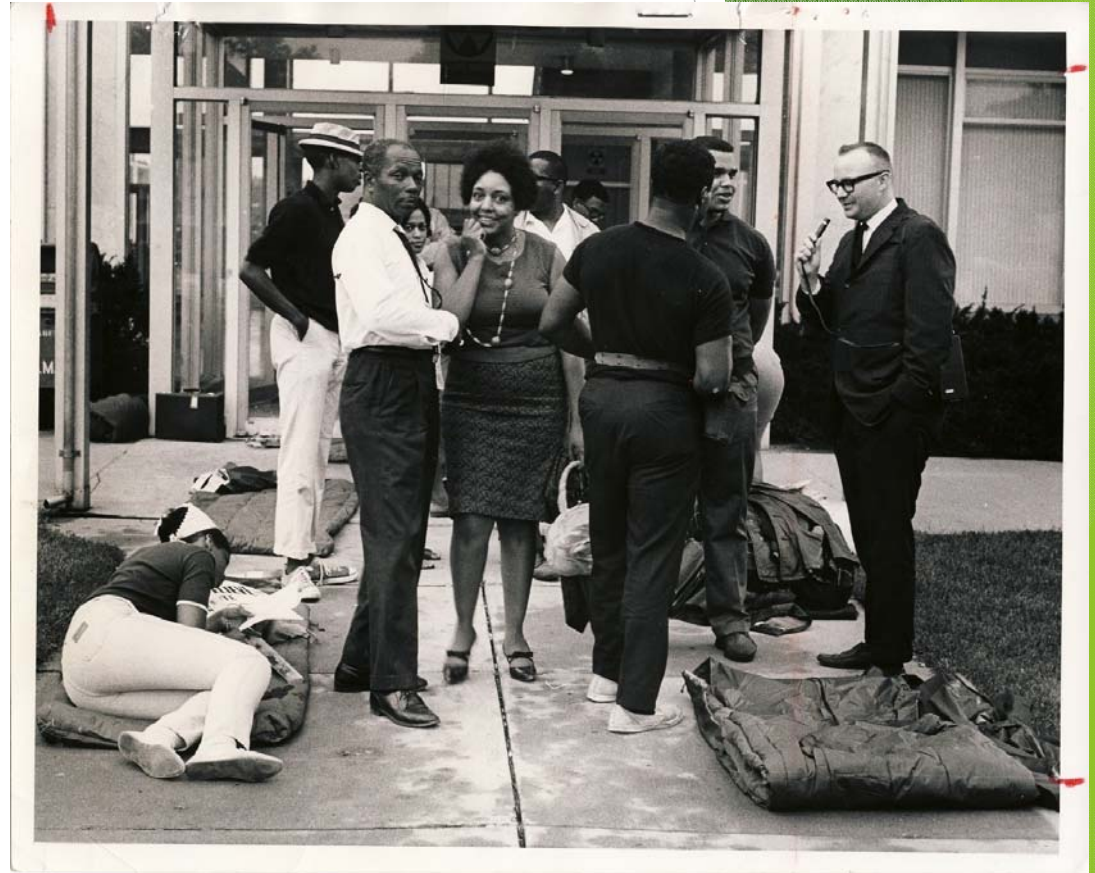


NEIGHBORHOOD PLANNING INITIATIVE



Historical Context

- ▶ The City of Flint and its citizens have a tumultuous relationship with urban planning.
- ▶ The 1960 Flint *Master Plan* called for slum clearance, redevelopment of underinvested areas, and the creation of I-475.
- ▶ The result of this plan and subsequent policies created massive amounts of urban sprawl, social imbalance, and racial segregation.
- ▶ The South Flint neighborhood, and particularly the Atherton East Housing Development, are direct products of this era.



Sleep-in at Flint City Hall to protest unfair housing conditions (1967)

Imagine Flint Master Plan for a Sustainable Flint

- ▶ 2013: *Imagine Flint* Master Plan is adopted after two years of group sessions, neighborhood and block club meetings, and public hearings with over 5,000 community participants
- ▶ Designed to address the new and unique challenges of a legacy city in transition, as well as rectify past injustices
- ▶ Guiding principles: social equity & sustainability, reshaping the economy, quality of life, adapting to change, youth, and civic life
- ▶ Neighborhood planning and development of quality affordable housing are called out as key implementation strategies



Atherton East Profile

- ▶ 1967- Atherton East public housing development is built on the urban fringe, within a flood plain
- ▶ Budget cuts, poor design, lack of amenities, and isolation have led to Atherton East being a community in need of relocation
- ▶ *Imagine Flint* Master Plan goal to relocate Atherton East to an area better connected to transit, services, employment, and schools



	Atherton	South Saginaw	Flint	Genesee County
Median Household Income	\$8,202	Not Available	\$27,199	\$43,418
Poverty Rate	81.61%	35.96%	36.64%	18.77%
Unemployment	35.7%	19.15%	21.66%	15.32%
Housing cost > 30% of income	56%	44%	44.63%	36.49%
White	14%	52.62%	37%	72.96%
Black	78%	39.57%	54%	20.10%
Children 0-17 years old	47%	30%	28.43%	25%

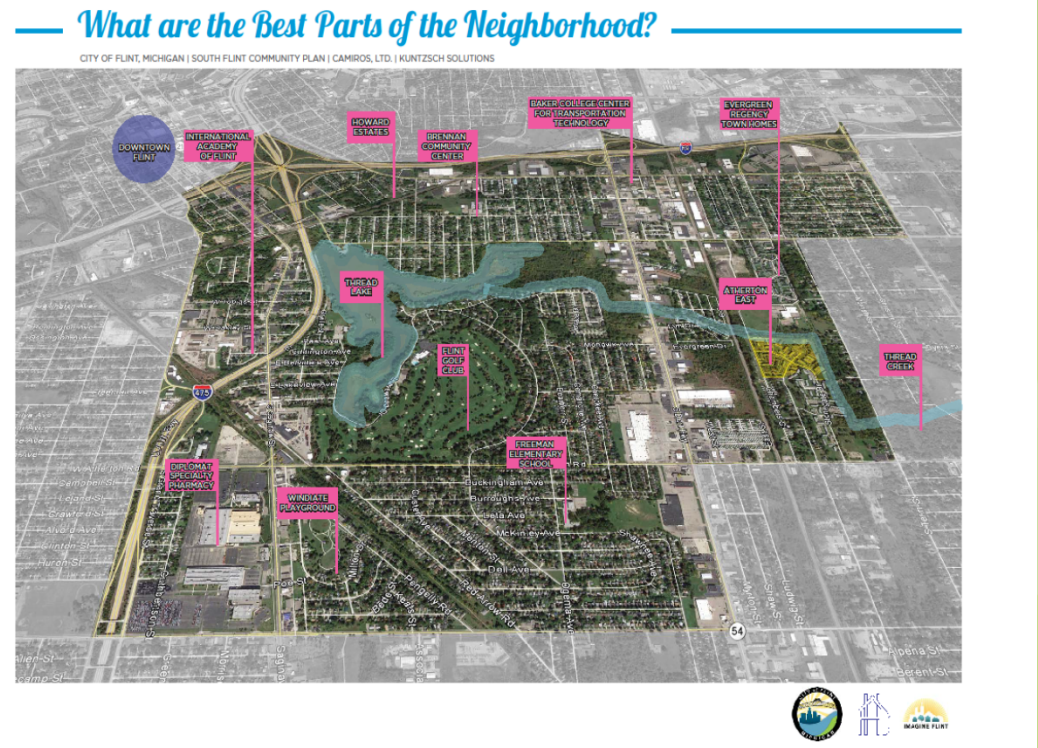
The Community as Planner

- ▶ “A plan is only as good as the community’s commitment to its implementation”
- ▶ Given the history of prior planning in Flint, it was critical that relationships were built based on trust, transparency, and equality.
- ▶ A concerted effort was made to ensure that the community not only had a seat at the table, but were equipped with the tools and information to actively engage.



Listening and Learning

- ▶ The first phase of the planning process included resident meetings, interviews and the creation of a project Steering Committee.
- ▶ Community meetings were used to learn resident perspectives on the best and worst parts of the neighborhood, assessing resident needs and preferences



The Community Vision for South Flint



Neighborhood Early Action Projects



Resident outreach staff conducting survey of needs



Footbridge brush clean-up project as a strategy for crime prevention



MTA bus stop re-installed @ Atherton East



Bike safety training day @ Atherton East